

University of Missouri Museum of Art and Archaeology

Presents:

A Midwestern View: The Artists of the Ste. Genevieve Art Colony

January 29 through May 15, 2011

Columbia, Missouri

During the 1930s and early 1940s, Ste. Genevieve (the oldest town in Missouri, located sixty miles south of St. Louis) was host to an important art colony. Founded by Aimee Schweig, Bernard Peters and Jesse Rickly, these artists were joined by other Regionalist painters including Thomas Hart Benton, Joe Jones, and Joseph Vorst. These painters hoped to develop an independent view of the world as they responded to contemporary political and artistic issues. The time they spent at the Colony was often one of experimentation. While in many such colonies artists frequently worked in a similar style, the artists at Ste. Genevieve showed their individualism as they experimented in numerous manners. This exhibition will explore the diversity of these artists and the richness of their art, as well as the important role of Missouri in Midwestern art.

For more information please visit our website at: <http://maa.missouri.edu/exhibitions/upcoming.html>

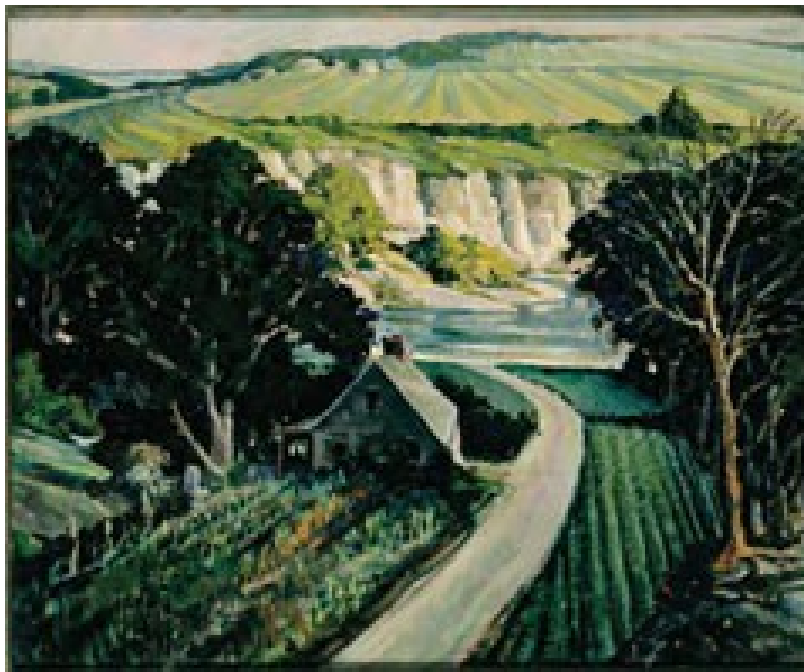


Image: **The Quarry**, Bernard E. Peters (American, 1893 - 1949) undated, Oil on board

Image Courtesy of The John & Susan Horseman Collection